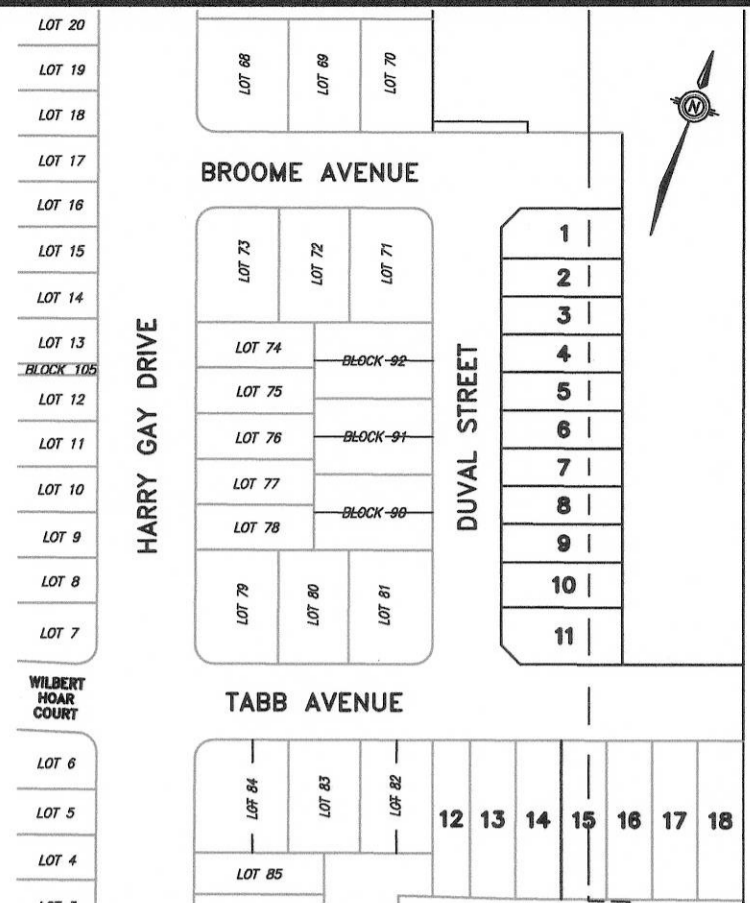
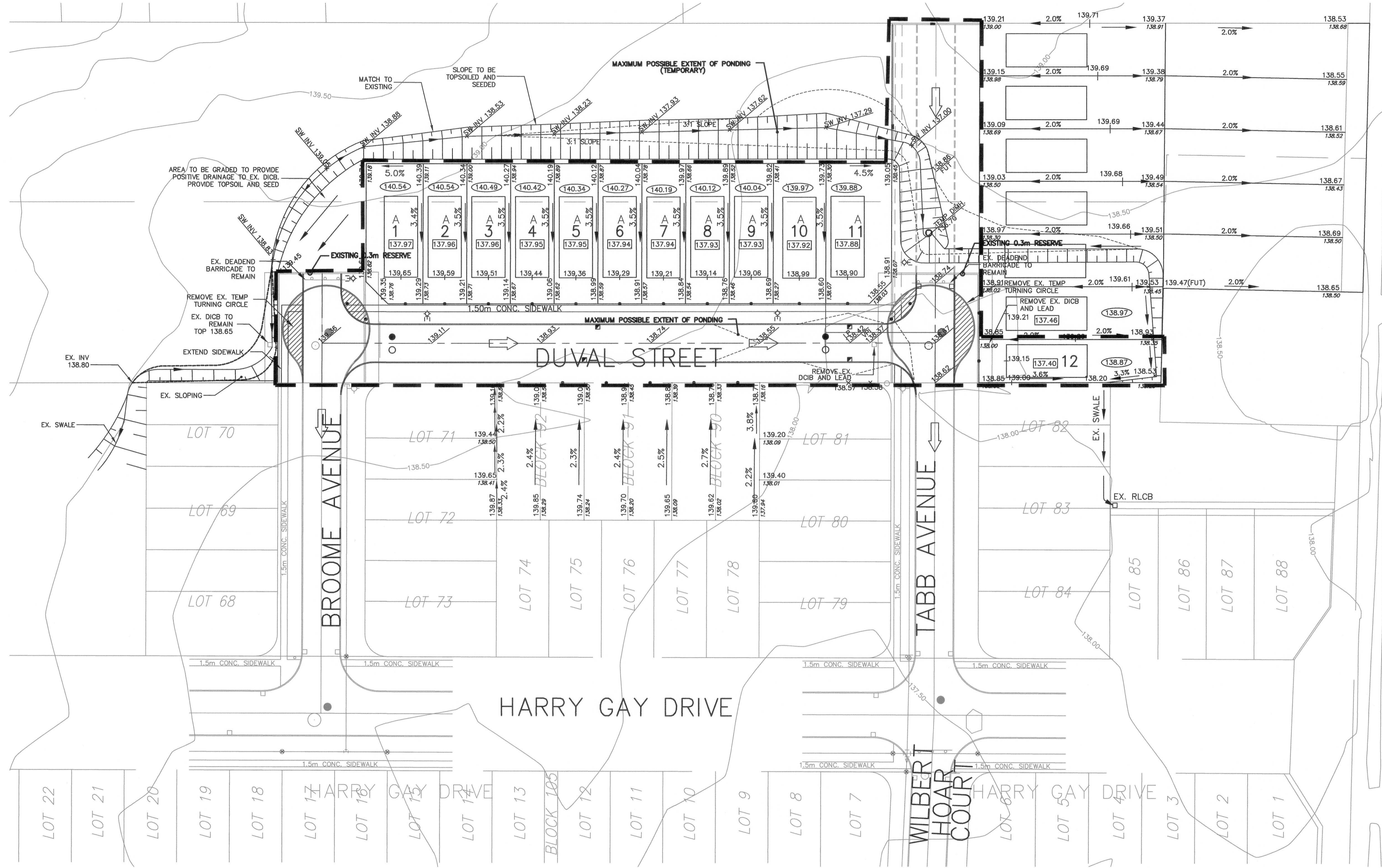


NOTE:
ALL ROOF LEADERS ARE TO DISCHARGE TO THE REAR YARD GRASSED AREAS WHEREVER POSSIBLE.

NOTE:
THE GRADES SHOWN ON LOTS 14 TO 23 REPRESENT FINAL GRADES ONCE THESE LOTS AND THE ADJACENT LANDS ARE DEVELOPED. IF THESE LOTS PRECEDE THE ADJACENT LANDS THEN TEMPORARY SLOPING AROUND THE PERIMETER WILL BE REQUIRED.



- LEGEND
- 140.63 SPECIFIED FRONT LOT GRADE
 - 138.22 SPECIFIED REAR HOUSE GRADE
 - 140.50 EXISTING CONTOUR
 - 139.45 EXISTING GROUND ELEVATION
 - 141.55 PROPOSED GROUND ELEVATION
 - 140.00 CROWLINE ELEV. OF PROP. PAVEMENT
 - DIRECTION OF OVERLAND FLOW ON LOTS
 - ⇨ DIRECTION OF OVERLAND FLOW
 - A FRONT DRAINING LOT
 - B SPLIT DRAINING LOT
 - BS BACK SPLIT
 - WO WALKOUT
 - [Pattern] PROPOSED DRIVEWAY LOCATION (MIN. WIDTH: 4.6 m)
 - LIMIT OF SUBDIVISION
 - * ENGINEERED FILL LOTS
 - - - - - LIMIT OF PONDING
 - 138.50 MINIMUM BASEMENT ELEVATION

NO.	REVISIONS TO DRAWING	MR.	DATE	APPR.
1	REVISED LOT NUMBERING TO REFLECT M-PLAN	MR	12/01/10	CR

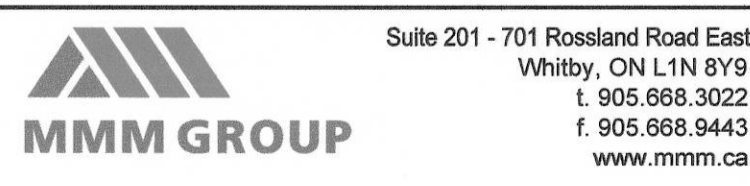
ALL PREVIOUS ISSUES OF THIS DRAWING ARE SUPERSEDED

CLIENT
HEADGATE DEVELOPMENTS INC.

MUNICIPALITY
THE MUNICIPALITY OF CLARINGTON

PROJECT TITLE
**NASH ROAD RESIDENTIAL SUBDIVISION
S-C-2004-002**

SHEET TITLE
LOT GRADING PLAN



APPROVED: ORIGINAL SIGNED BY
TONY CANNELLA ON AUG. 25, 2010
Director Engineering Services Dept. Municipality of Clarington
Approved as to form in reliance upon the professional skill & ability of the professional engineer in accordance with the provisions of the Professional Engineers Act, R.S.O. 1990, Chapter 190, Section 24(1).

Date: 12/01/10

APPROVED: [Signature]
Regional Municipality of Durham

DATE: _____

DESIGNED	C.A.R.	DRAWN	M.G.K.	CHECKED	C.A.R.
SCALE	1:500	DATE	FEBRUARY 2010		
PROJECT NUMBER	10-09623			DRAWING NUMBER	
				GR1	